



20 Bazley Road

Arbourthorne, Sheffield, S2 2EQ

£800 PCM

A two bedroom semi detached house, conveniently placed for access to the city centre and local shops. The property is AVAILABLE 22ND FEBRUARY 2026 ON AN UNFURNISHED BASIS

- Two bedroom Semi detached house with off road parking
- Gas central heating
- uPVC double glazing
- Lounge with views to the front and rear
- Kitchen with pantry
- Ground floor Cloakroom
- Great rear garden
- UNFURNISHED
- AVAILABLE 22ND FEBRUARY 2026
- COUNCIL TAX BAND: A

Viewing

Please contact our ELR Europa Link Office on 01142689900 if you wish to arrange a viewing appointment for this property or require further information.



2



1



1



D

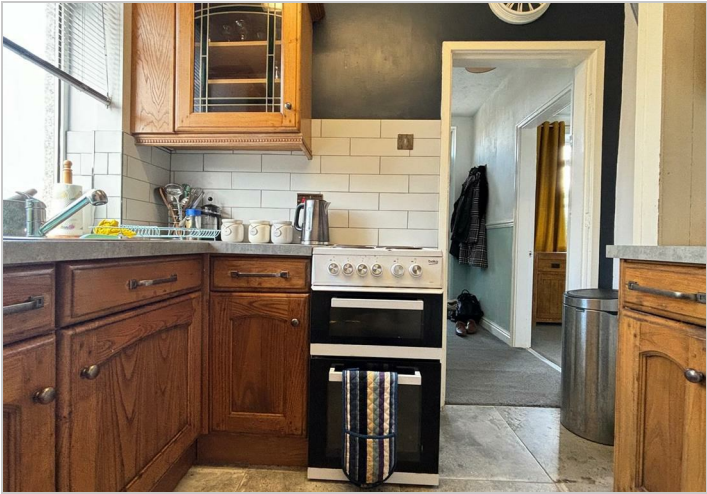
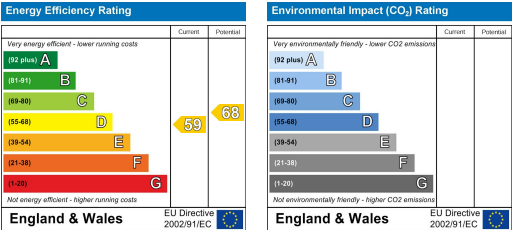
Floor Plan



Area Map



Energy Efficiency Graph



These particulars, whilst believed to be accurate are set out as a general outline only for guidance and do not constitute any part of an offer or contract. Intending purchasers should not rely on them as statements of representation of fact, but must satisfy themselves by inspection or otherwise as to their accuracy. No person in this firms employment has the authority to make or give any representation or warranty in respect of the property.